

Photoshop V5.0 – Color setup and printing with the Artainium ICC Profile

Photoshop's color space needs to be set to the working space of which the Artainium ICC Profile was created. This then allows for a more accurate screen display of your images. The accuracy of the displayed image on your monitor will highly be dependent on the quality of your monitor and more important a calibrated monitor ICC profile. Photoshop's Adobe Gamma will allow you to calibrate and save an ICC profile for your monitor.

If you have never set up your monitor before follow the steps below to set up your monitor and Photoshop.

Use **Adobe Gamma** located in the **Control Panel** folder to set up your monitor
Start – Settings – Control Panel Double click the **Adobe Gamma** Icon and follow the on-screen wizard and save your adjustments.

Adobe RGB (1998).icm needs to be copied into the C:\Windows\System\Color folder before you open Photoshop. If you already have Photoshop open, you will need to close it down before it will read the new profile from this folder.

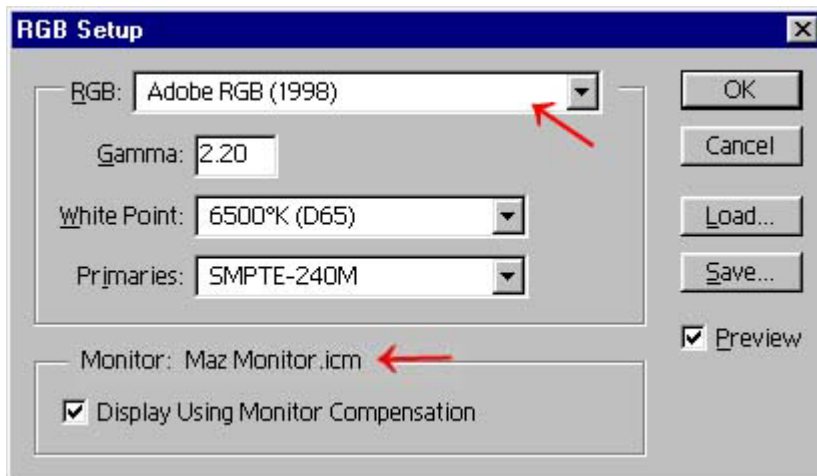
Start Photoshop

Here we will configure Photoshop's default color space

Open the RGB settings configuration window **File – Color Settings – RGB Setup...**

Select **Adobe RGB (1998)** from the **RGB** drop down menu

All the other setting will change as shown above. If not, set them as shown below

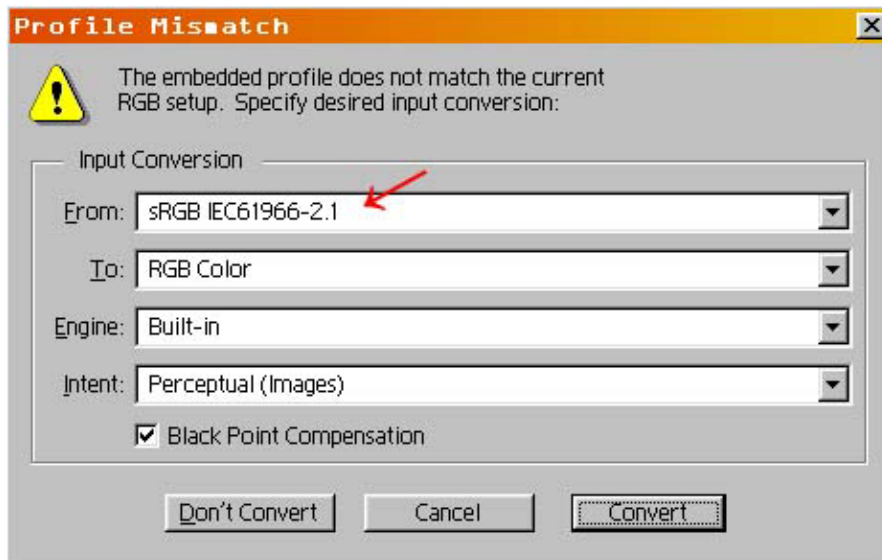


The **Monitor**: name will be the one you saved when you calibrated your monitor in Adobe Gamma

Click **OK**.

Photoshop's color space is now set to use the same space that the Artainium ICC profiles were created.

Because your color space has probably changed from sRGB to Adobe RGB (1998) You may encounter a profile mismatch warning when opening an old image.



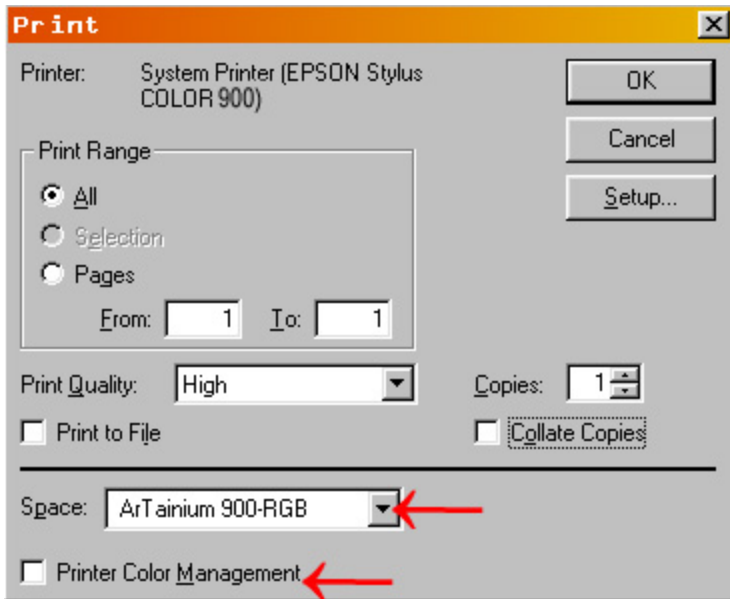
This window shows that the image you are opening was created in the sRGB input profile.

Leave the setting as they are and click Convert so that the image is opened in the new Adobe RGB (1998) space

You can now work with the image as normal.

When your image is ready to print-

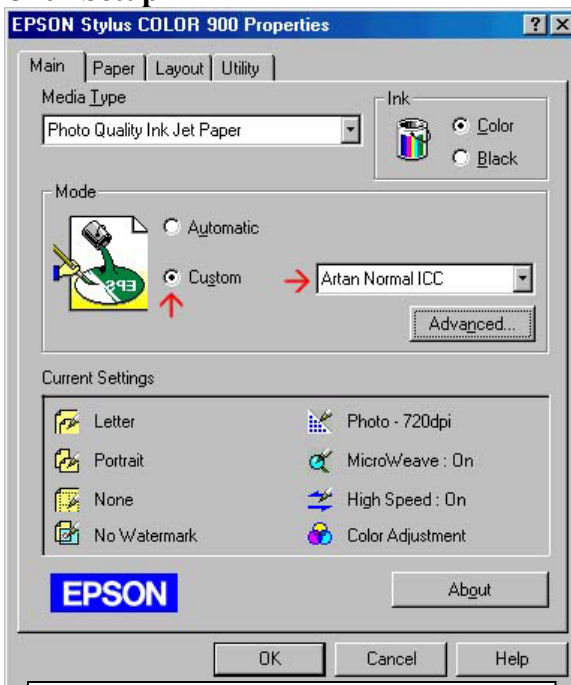
Click **File – Print**



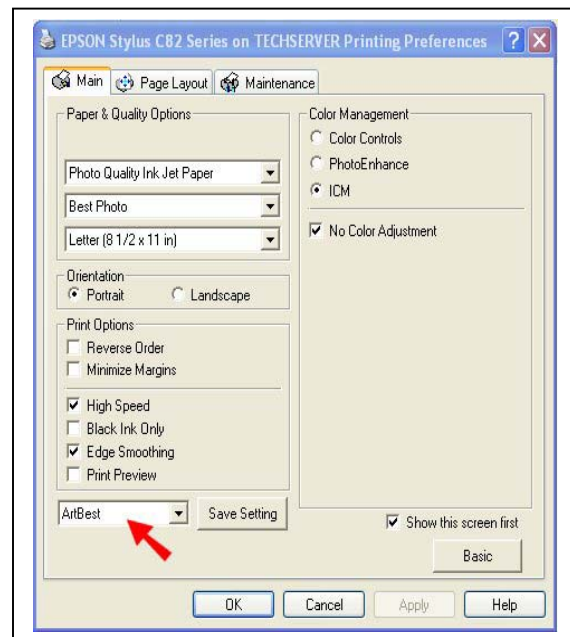
Select the Artainium ICC Profile from the **Space** menu

De-select (uncheck) **Printer Color Management**

Click **Setup**



Old style printer driver :- 3000, 900, 980, C80, 1280



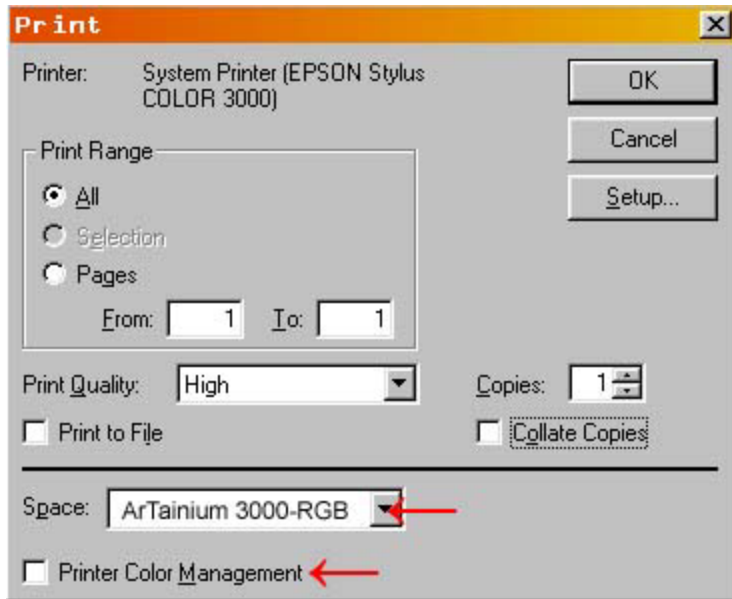
New style printer driver :- C82, 2200

Click the **Custom** Button

Select the Artainium print setup profile created when you configured the Epson print driver.

You can click Advanced to double-check your settings

Click **OK** (takes you back to the previous screen)



Check that the settings have not changed. Sometimes it does this when you print your first image

Click **OK** to print

Photoshop will now print your image using the Artainium ICC profile combined with the configured Epson print Driver

Note: if you can't choose the Artainium RGB profile from the drop down menu the ICC profile is not yet installed on your pc or you may not have restarted Photoshop since the ICC installation. Close and re-launch Photoshop.