

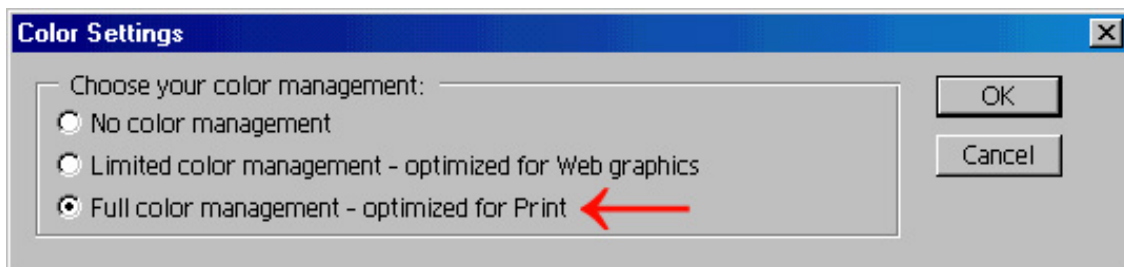
Photoshop Elements – Color setup and printing with the Artainium ICC Profile

Photoshop's color space needs to be set to the working space of which the Artainium ICC Profile was created. This then allows for a more accurate screen display of your images. The accuracy of the displayed image on your monitor will highly be dependent on the quality of your monitor and more important a calibrated monitor ICC profile. Photoshop's Adobe Gamma will allow you to calibrate and save an ICC profile for your monitor.

Follow the steps below to set up your monitor and Photoshop.

Use **Adobe Gamma** located in the **Control Panel** folder to set up your monitor
Start – Settings – Control Panel Double click the **Adobe Gamma** Icon and follow the on-screen wizard and save your adjustments. A step-by-step guide can be found at <http://www.adobe.com/support/techguides/color/gamma/gammastepbystep.html>

Open the RGB settings configuration window **Edit – Color Settings..**



Select **Full color management – optimized for Print**

Click **OK**

Photoshop's color space is now set to use the same space that the Artainium ICC profiles were created and allow the Artainium printer profile selection in the print options.

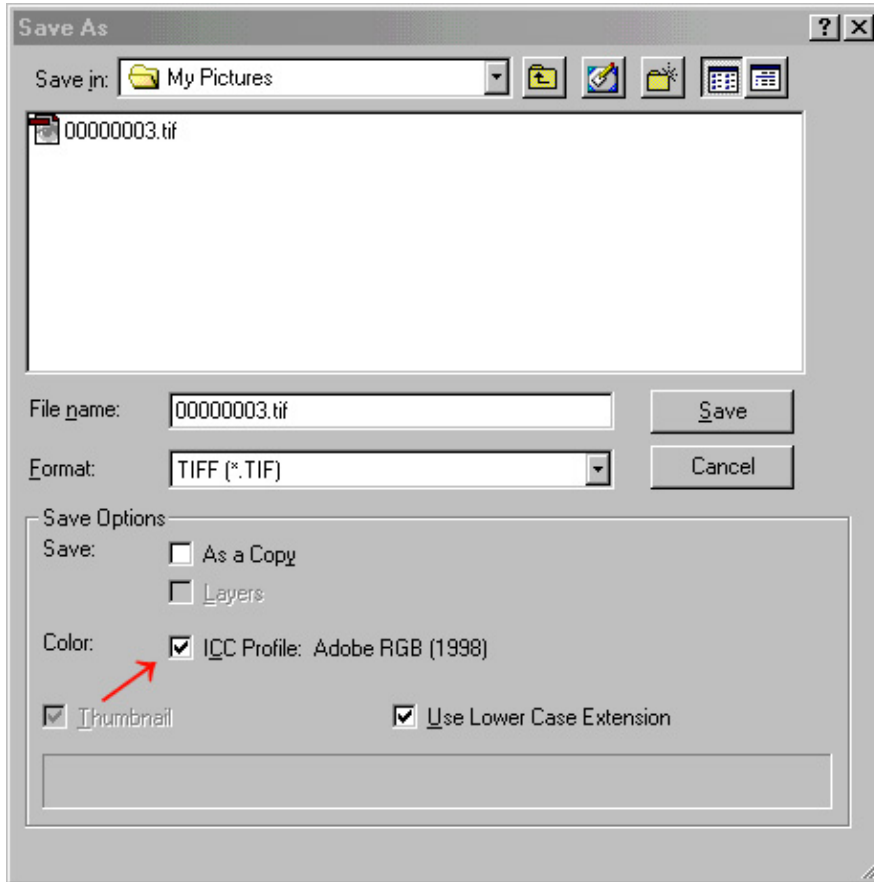
Photoshop Elements internal color working space is set to Adobe RGB (1998) by default and cannot be changed, which is good news as the Artainium RGB print ICC was created for that space!

Because Photoshop Elements does not have an input profile mis-match configuration, Images opened in Elements are only displayed with the Adobe RGB 1998 profile and printed with the original workspace (embedded profile or no profile). What does this mean?

Well usually you do not need to worry what the images profile is when you open it but if you are hyper critical for color matching it is best to save your image first with the Adobe RGB 1998 working space and re open the image before you print it.

To do this: open your image as normal

Click File – Save As..



Click(check) in the **Color: ICC Profile Adobe RGB (1998)**

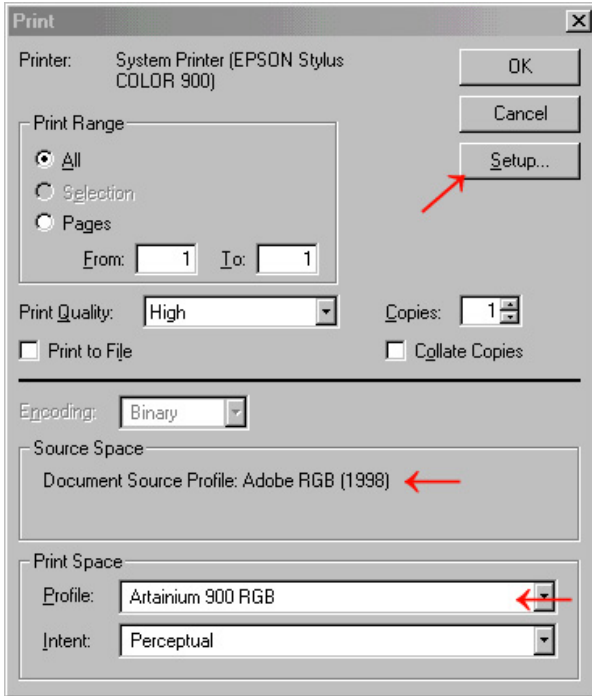
Click **Save**

Now reopen the image, which will now have the embedded Adobe RGB (1998) workspace profile

You can now work with the image as normal.

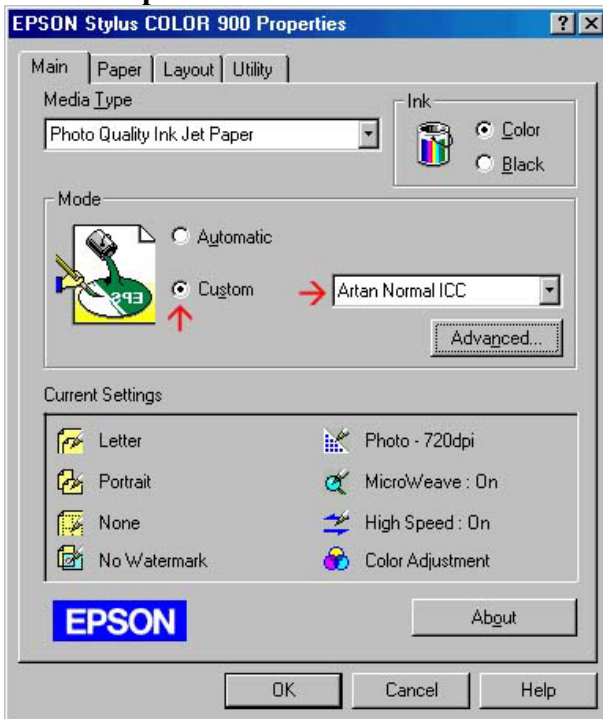
When your image is ready to print-

Click **File – Print**

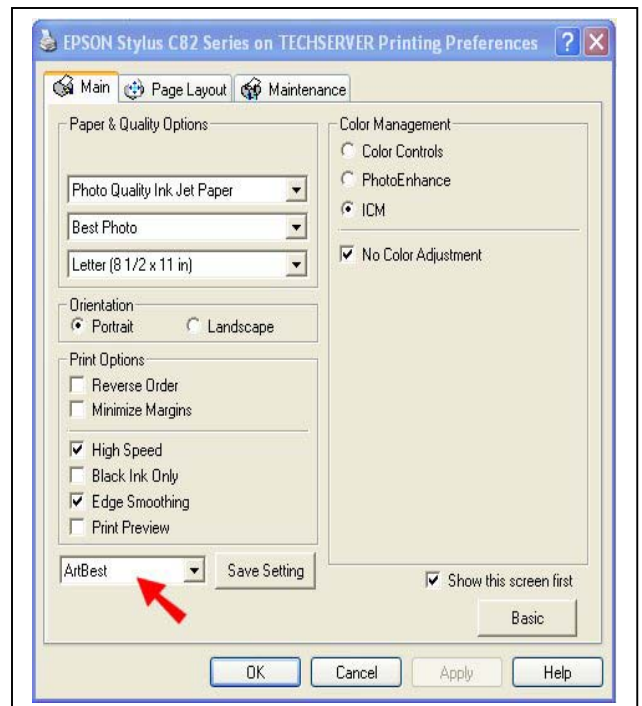


Select the Artainium RGB ICC Profile from the **Space** menu
Source Space will display the images embedded workspace and may differ as shown

Click **Setup**



Old style printer driver :- 3000, 900,
980, C80, 1280



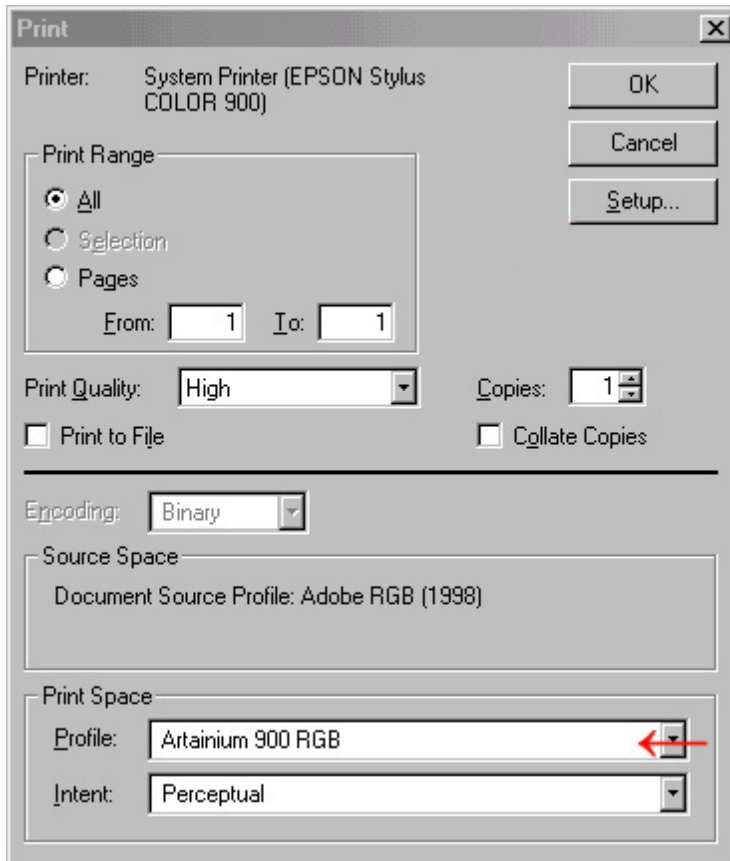
New style printer driver :- C82, 2200

Click the **Custom** Button

Select the Artainium print setup profile created when you configured the Epson print driver in [Step 2](#)

You can click Advanced to double-check your settings

Click **OK** (takes you back to the previous screen)



Double check that the settings have not changed. Sometimes it does when you print your first image

Click **OK** to print

Photoshop will now print your image using the Artainium ICC profile combined with the configured Epson print Driver

Note: if you cant choose the Artainium RGB profile from the drop down menu
Means the ICC profile is not yet installed on your pc or you may not have restarted Photoshop since the ICC installation. Close and re-launch Photoshop.