

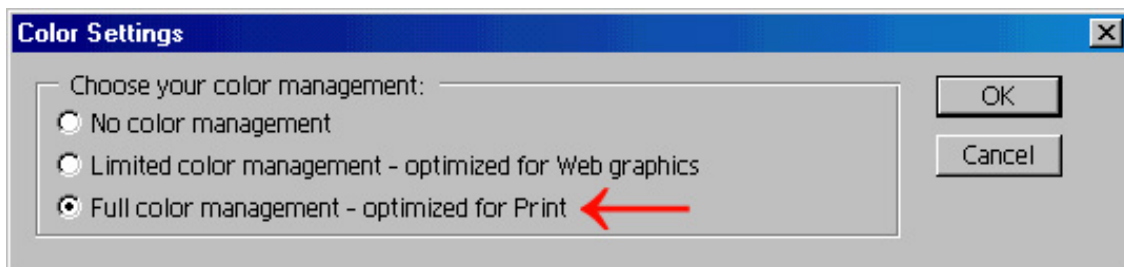
Photoshop Elements V2.x – Color setup and printing with the Artainium ICC Profile

Photoshop's color space needs to be set to the working space of which the Artainium ICC Profile was created. This then allows for a more accurate screen display of your images. The accuracy of the displayed image on your monitor will highly be dependent on the quality of your monitor and more important a calibrated monitor ICC profile. Photoshop's Adobe Gamma will allow you to calibrate and save an ICC profile for your monitor.

Follow the steps below to set up your monitor and Photoshop.

Use **Adobe Gamma** located in the **Control Panel** folder to set up your monitor
Start – Settings – Control Panel Double click the **Adobe Gamma** Icon and follow the on-screen wizard and save your adjustments. A step-by-step guide can be found at <http://www.adobe.com/support/techguides/color/gamma/gammastepbystep.html>

Open the RGB settings configuration window **Edit – Color Settings..**



Select **Full color management – optimized for Print**

Click **OK**

Photoshop's color space is now set to use the same space that the Artainium ICC profiles were created and allow the Artainium printer profile selection in the print options.

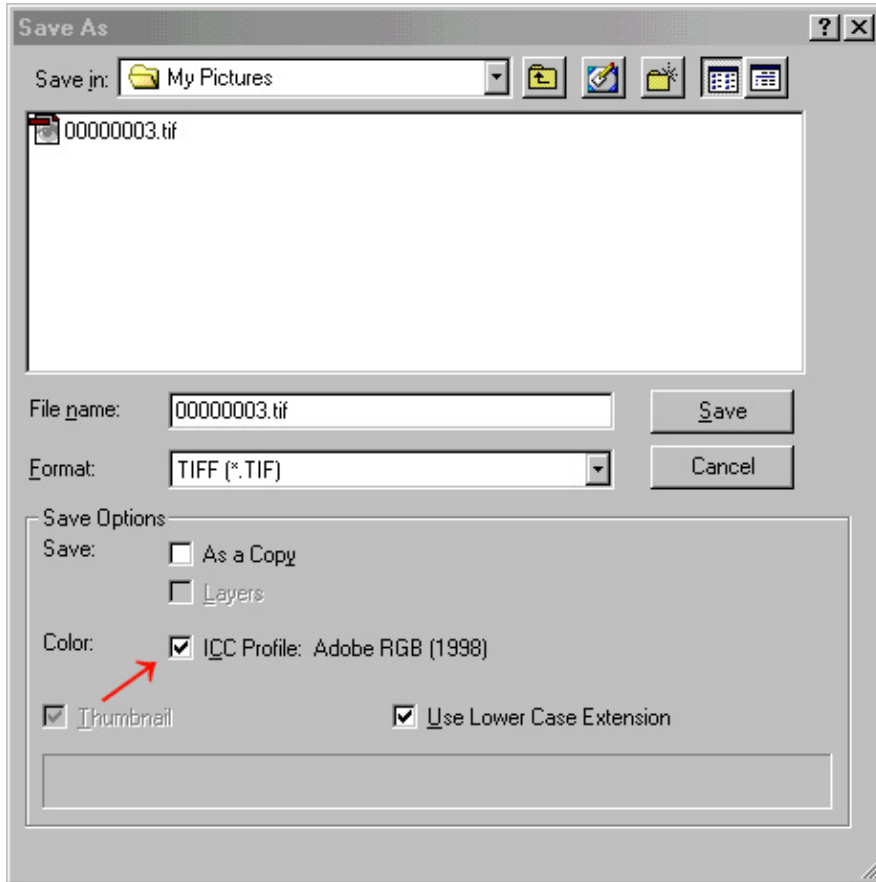
Photoshop Elements internal color working space is set to Adobe RGB (1998) by default and cannot be changed, which is good news as the Artainium RGB print ICC was created for that space!

Because Photoshop Elements does not have an input profile miss-match configuration, Images opened in Elements are only displayed with the Adobe RGB 1998 profile and printed with the original workspace (embedded profile or no profile). What does this mean?

Well usually you do not need to worry what the images profile is when you open it but if you are hyper critical for color matching it is best to save your image first with the Adobe RGB 1998 working space and re open the image before you print it.

To do this: open your image as normal

Click File – Save As..



Click(check) in the **Color: ICC Profile Adobe RGB (1998)**

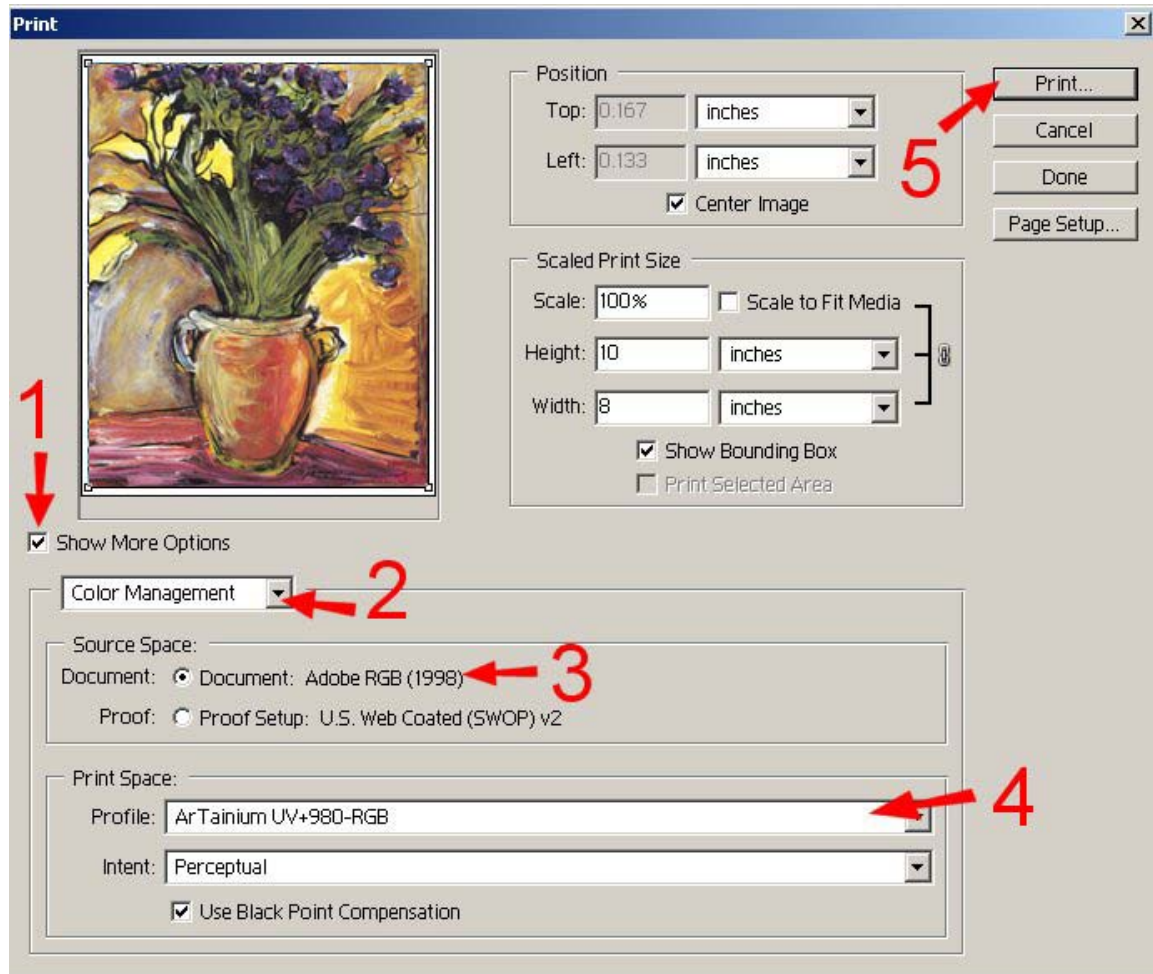
Click **Save**

Now reopen the image, which will now have the embedded Adobe RGB (1998) workspace profile

You can now work with the image as normal.

Photoshop Printing with the Artainium ICC Profile

When your image is ready to print, Click **File- Print with Preview...**



Click Show More Options 1 This will expand the window shown above

Click the drop down arrow 2 and choose **Color Management**

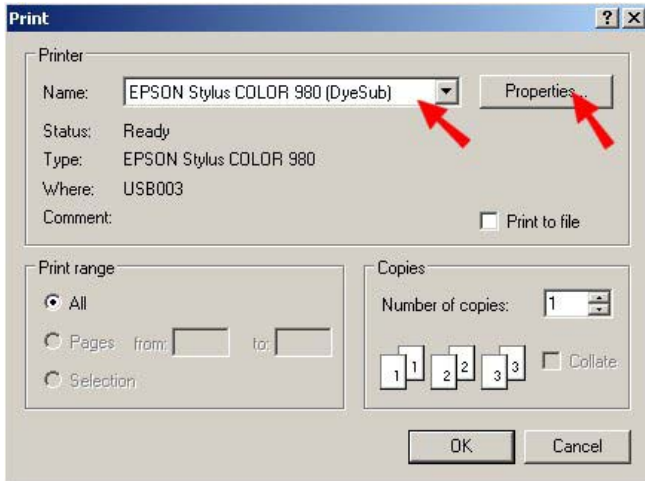
This will expand the window as shown above.

In Source Space: Click Document 3

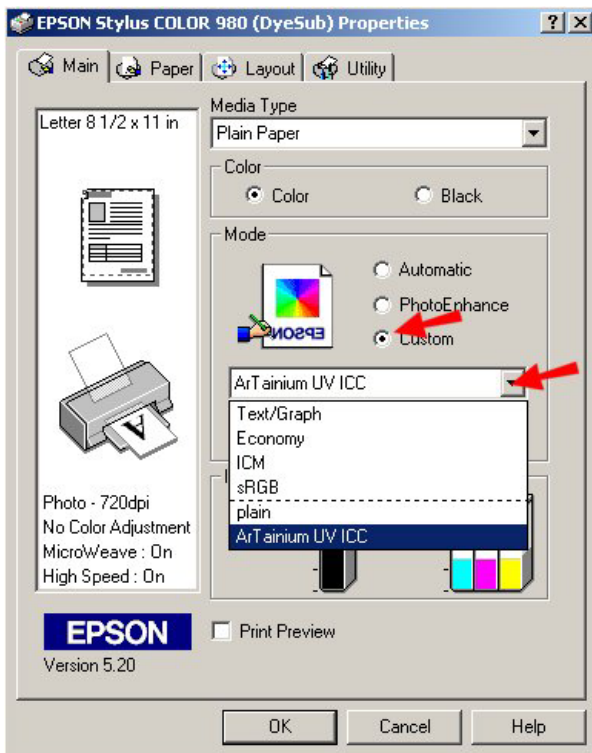
From the drop down menu for the Print Space: Profile: 4 Select the ArTainium ICC Profile for your printer

Click Print 5

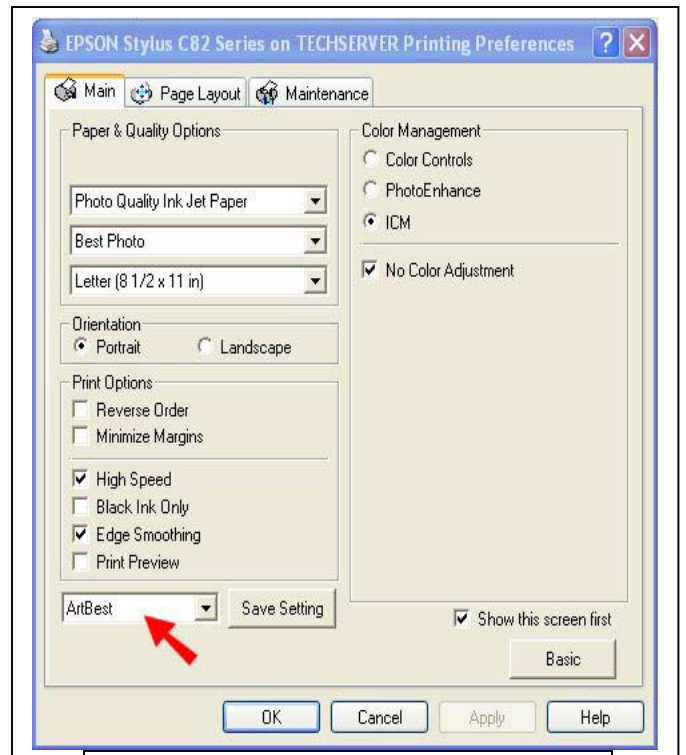
Note: If you don't see any reference to Artainium RGB in the print space list means the ICC profile is not installed in your system or Photoshop has not been restarted since the profile was installed (Restart Photoshop)



Select your printer and click **Properties...**



Old style printer driver :- 3000, 900, 980, C80, 1280



New style printer driver :- C82, 2200

Click the **Custom** Button

Select the Artainium print setup profile created when you configured the Epson print driver.

You can click Advanced to double-check your settings

Click **OK** and Click **OK** to print

Photoshop will now print your image using the Artainium ICC profile combined with the configured Epson print Driver.