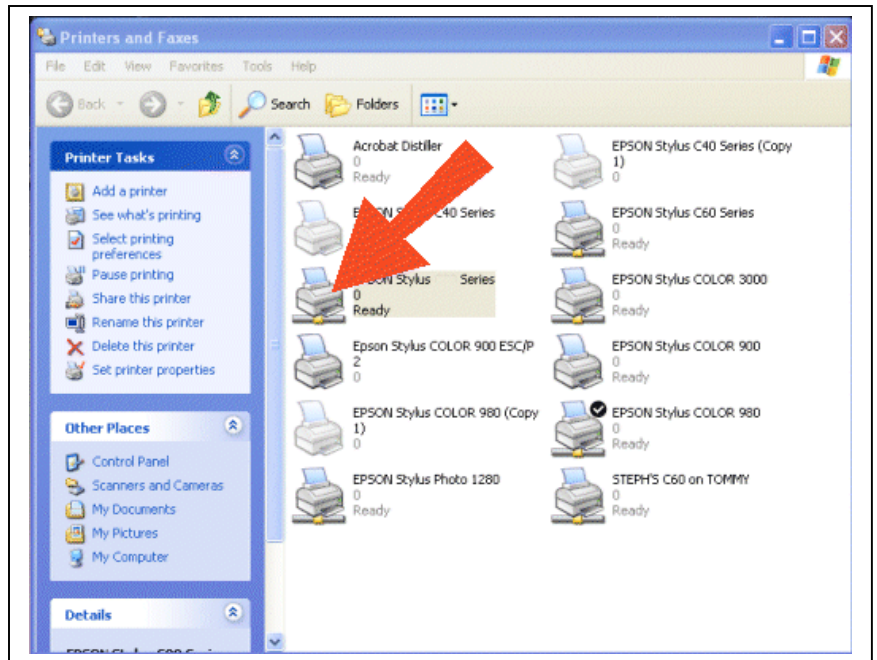


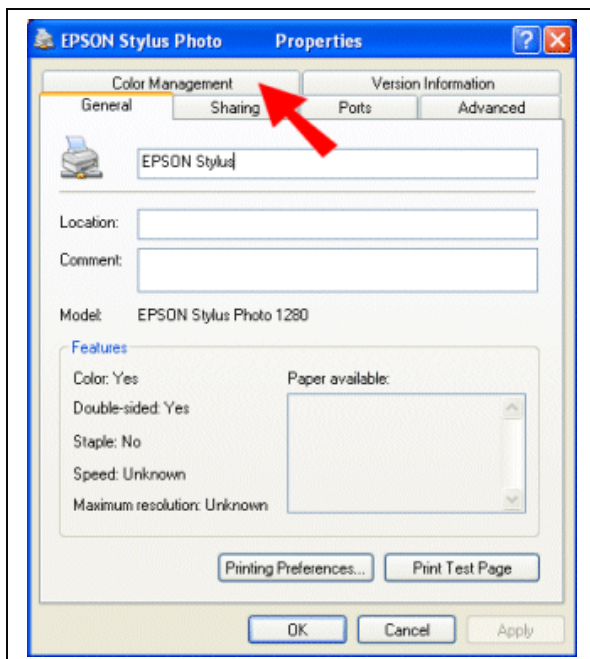
# Using color correction profile with Mural 7

1. On the Pc Desktop, click **Start** – **Settings** – **Printers**.

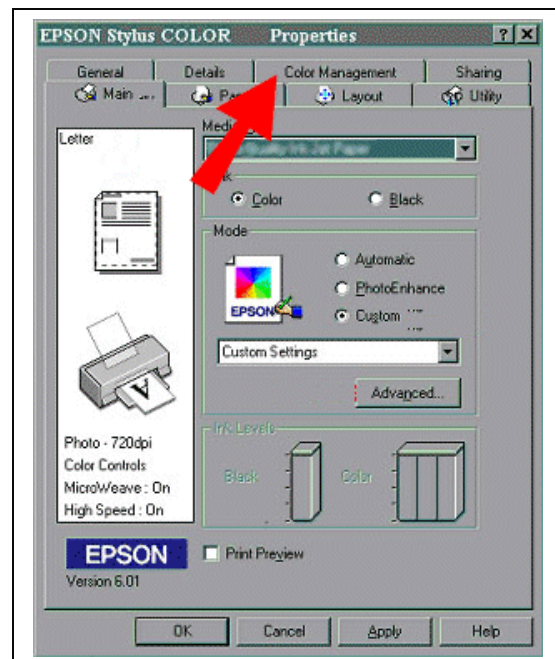
2. **Right Click** your Printer Icon and select **Properties** from the context menu



Click on **Color Management**

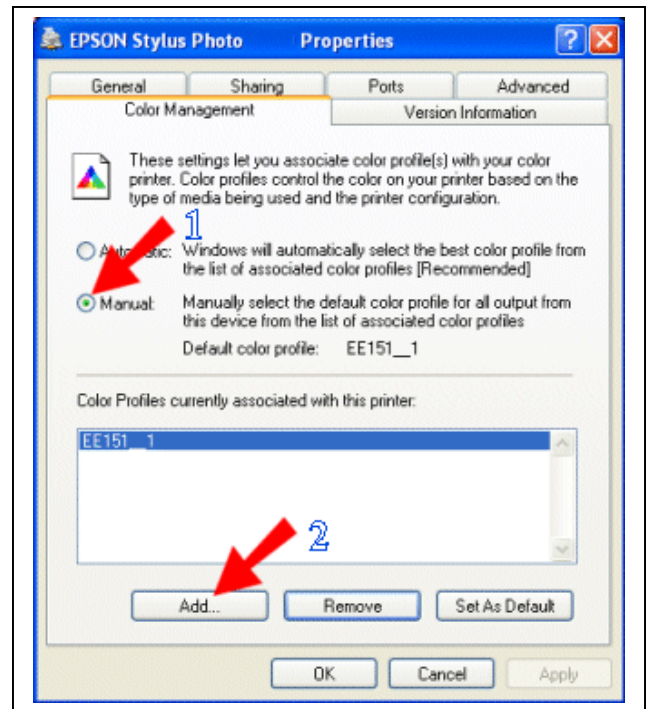


Windows XP



Windows 95/98/ME

1. Click on **Manual**
2. Then click on **Add**



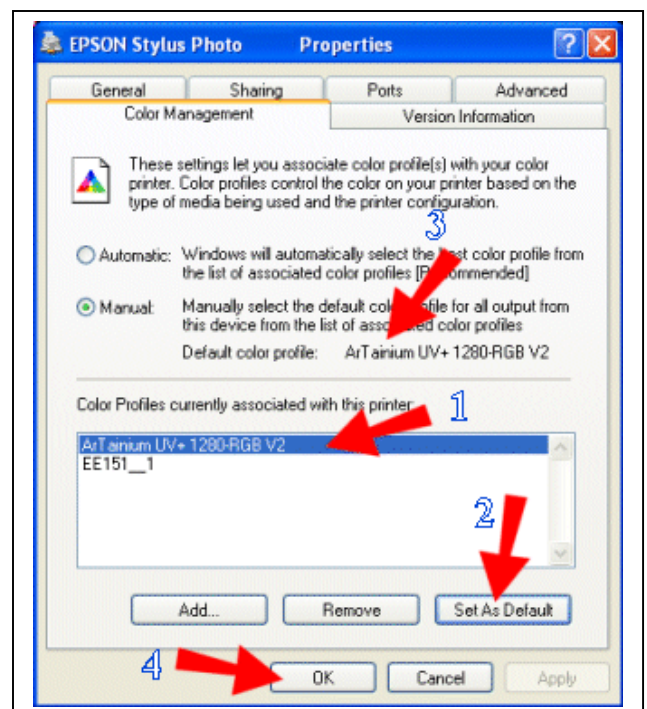
When the browser window opens look for the relevant ArTainium RGB profile and click on it.

Then click on **'Add'**

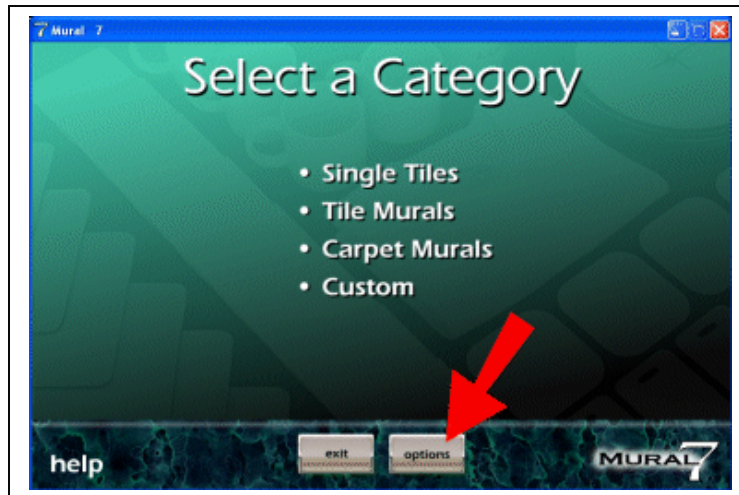
You will see the ArTainium profile now appear in the color profile window.

1. Click on the ArTainium profile to highlight it.
2. Click on **Set as Default**.
3. You will now see the correct profile appear as the default color profile.
4. Click on **ok** to close this box

The profile is now setup in the printer driver. If you have setup the printer driver for 'no color adjustment' (separate instructions) then close all printer windows.

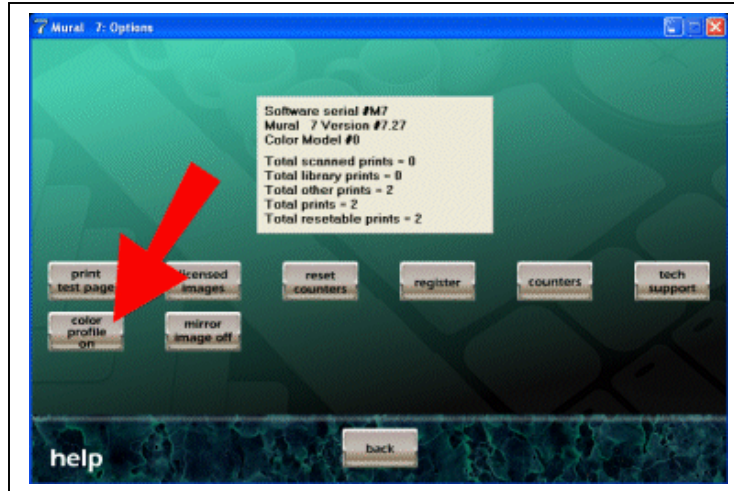


After opening Mural 7 click on the 'options' button.



Make sure that the 'Color Profile' button is set to 'On'.

Click on 'back' to start your Mural 7 session.



After setting up your Mural ready for printing you need to:

1. Click on 'Select Printer' and choose your dye sub printer.
2. Click on 'properties'
3. Choose 'custom' and pick the dye sub configuration that you will have created using the printer driver setup instructions.

Click on ok then 'next' on your Mural 7 screen to get to your print screen.

