

# Corel Draw 9 – Color setup and printing with the Artainium ICC Profile

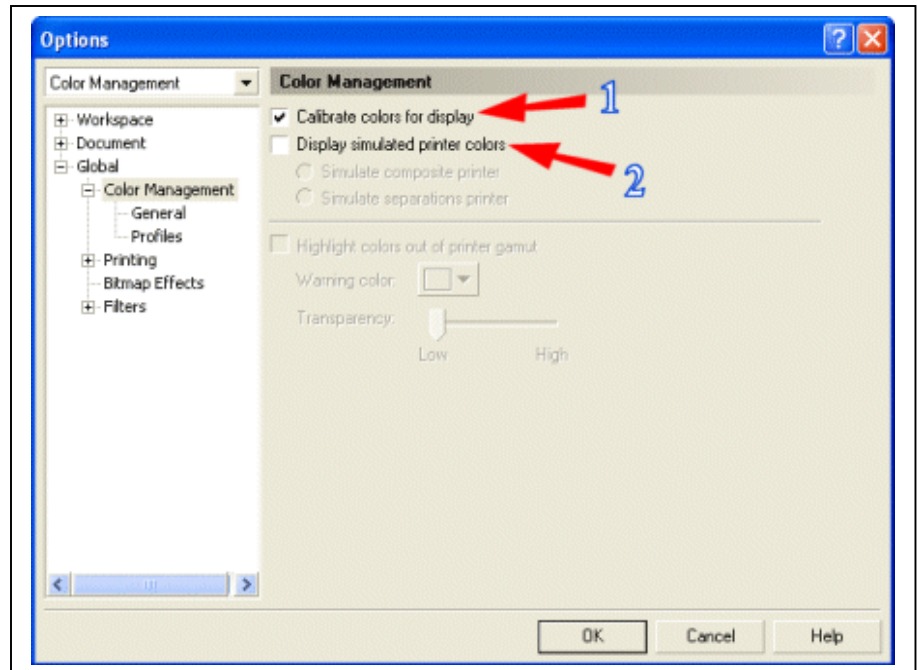
Corel Draw's color space needs to be set to the working space of which the Artainium ICC Profile was created. This then allows for a more accurate screen display of your images. The accuracy of the displayed image on your monitor will highly be dependent on the quality of your monitor and more important a calibrated monitor ICC profile.

Open the Color Management Options window **Tools – Color Management...**

**Note:** You must have an image or blank page on-screen to select this option

Under Color Management options make sure that:-

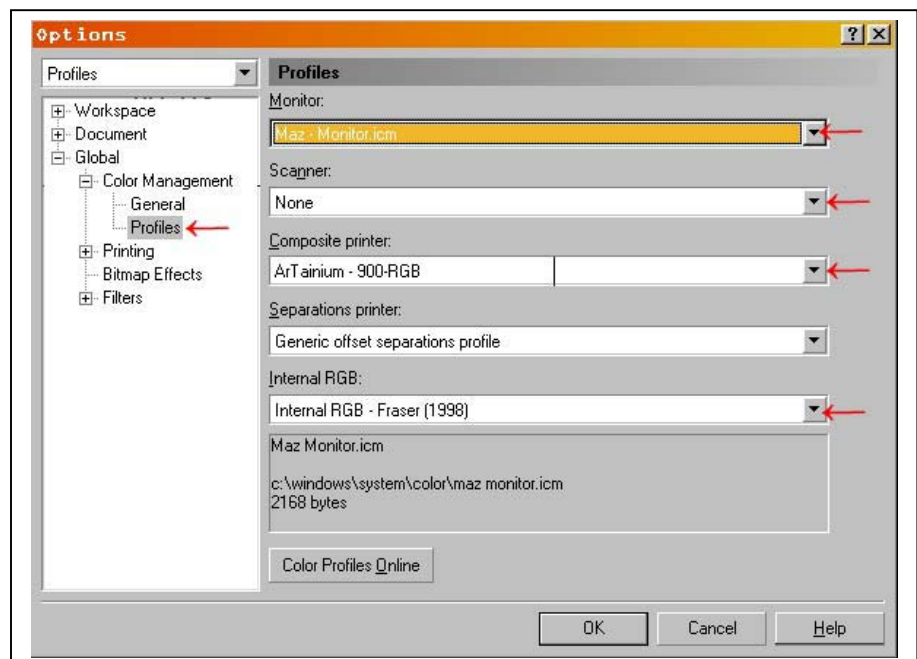
1. Calibrate colors for display is 'checked'
2. Display simulated printer colors is 'Un-Checked'



Locate the **Profiles** Window by clicking the **Global** link – **Color Management** then **Profiles**

Here we will configure Corel's default color space and ICC Profiles

**See following table.**



## Color Management Options

<b>Monitor:</b>	Select the ICC profile for your monitor (If you also have Adobe Photoshop on your system you can select the profile you created in Adobe Gamma). <b>If in doubt, leave it as Generic CMYK</b>
<b>Scanner:</b>	Select your scanner ICC profile. If your scanner is not listed you can leave it as the default. <b>If you scan your images through the scanner's own software, this setting is redundant.</b>
<b>Composite Printer:</b> <b>**Important**</b>	Select the Artainium ICC printer profile. <b>Note:</b> if you can't choose the Artainium RGB profile from the drop down menu it means the ICC profile is not yet installed on your pc or you may not have restarted Corel since the ICC installation. Close and re-launch Corel
<b>Separations Printer:</b>	Not used or set to your current device if you print separations.
<b>Internal RGB:</b>	Select Internal RGB – Fraser (1998) Believe me it is there (it is a Corel profile) it just takes some finding.

Click **OK**.

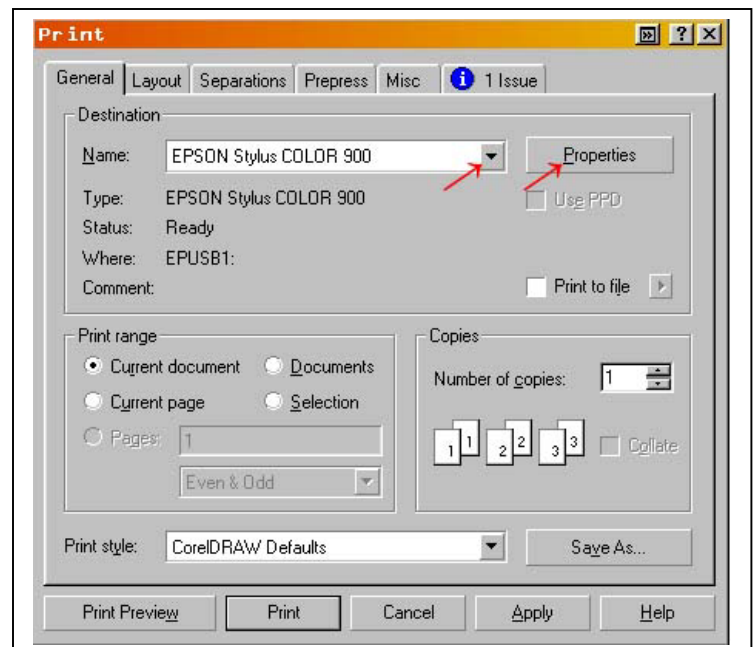
Corel's color space and printer ICC is now set to use the same space that the Artainium ICC profiles were created.

You can now work with an image as normal.

When your image is ready to print-

Click **File – Print**

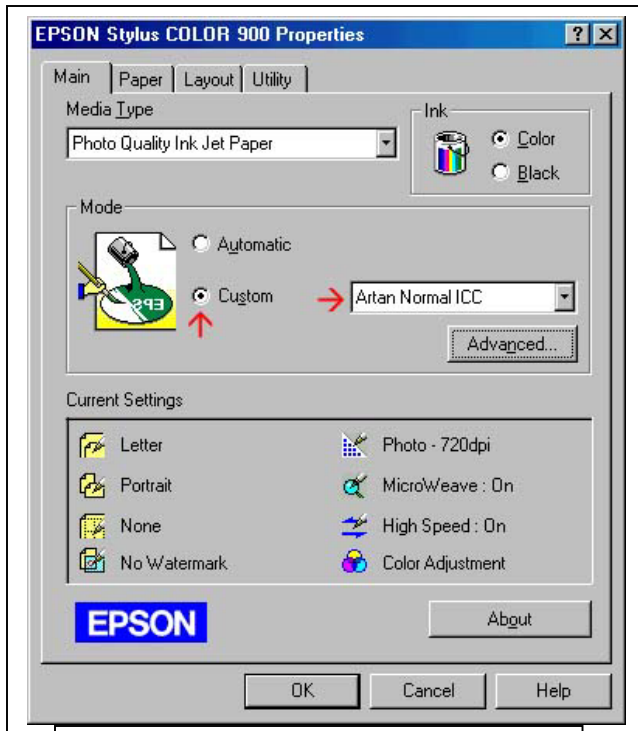
Select your printer and click **Properties**



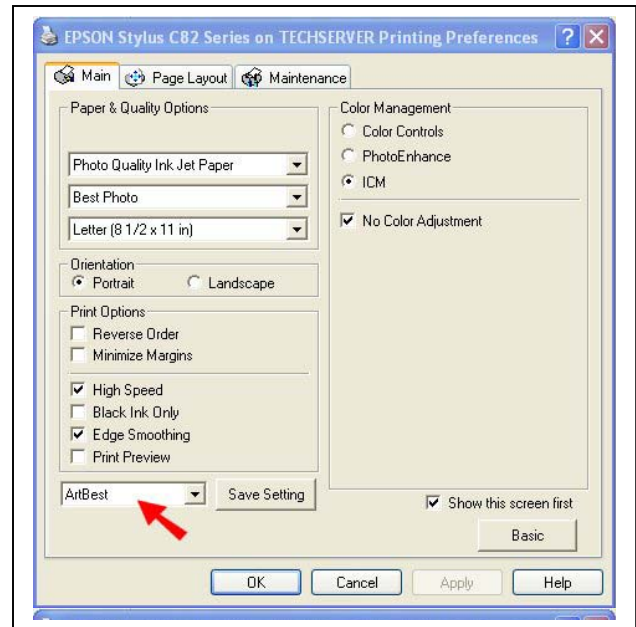
Click the **Custom** Button

Select the Artainium print setup profile created when you configured the Epson print driver.

You can click Advanced to double-check your settings - Click **OK** (takes you back to the previous screen)



Old style printer driver :- 3000, 900,  
980, C80, 1280



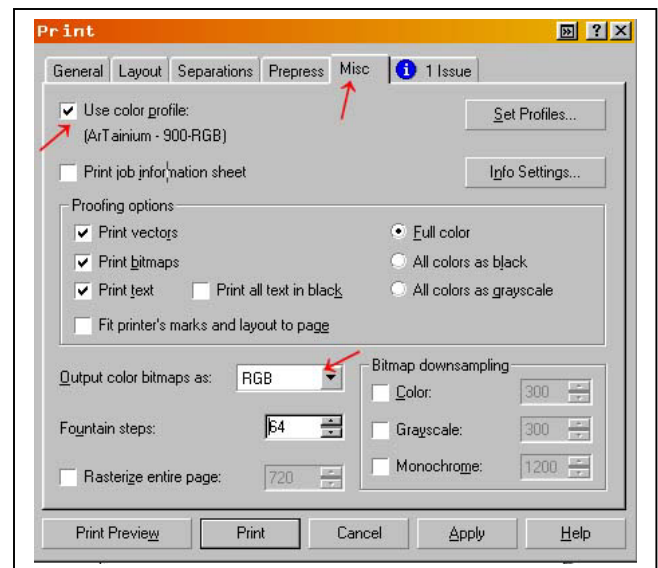
New style printer driver :- C82, 2200

Click the **Misc** Tab

**Check Use Color Profile.** You should see the name of the Artainium ICC profile next to the check box as shown above.

**Output Color Bitmaps:** Should be set to **RGB**

Click **print**



Corel will now print your image using the Artainium ICC profile combined with the configured Epson print Driver

**Note:** if the Artainium RGB profile is not shown next to the Use Color profile check box Means the ICC profile has not been set up in the global color management, is not yet installed on your pc or you may not have restarted Corel since the ICC installation. Close and re-launch Corel.