

Corel Draw 8 – Color setup and printing with the Artainium ICC Profile

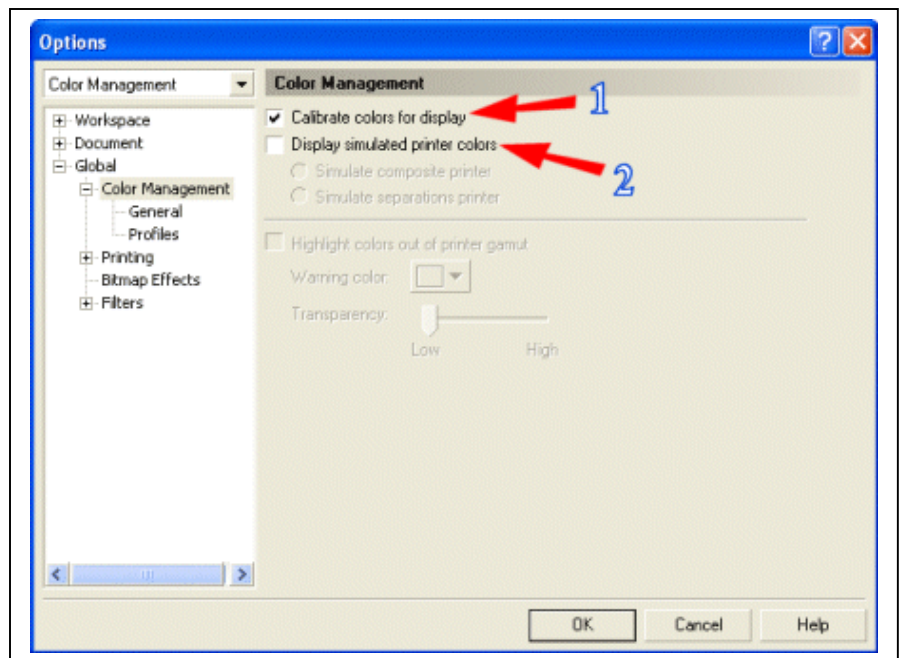
Corel Draw's color space needs to be set to the working space of which the Artainium ICC Profile was created. This then allows for a more accurate screen display of your images. The accuracy of the displayed image on your monitor will highly be dependent on the quality of your monitor and more important a calibrated monitor ICC profile.

Open the Color Management Options window **Tools – Options...**

Expand the Global tree and click on 'Color Management'

1. Make sure **calibrate colors for display** is checked.
2. Make sure that the **'Display simulated printer colors'** is Unchecked.

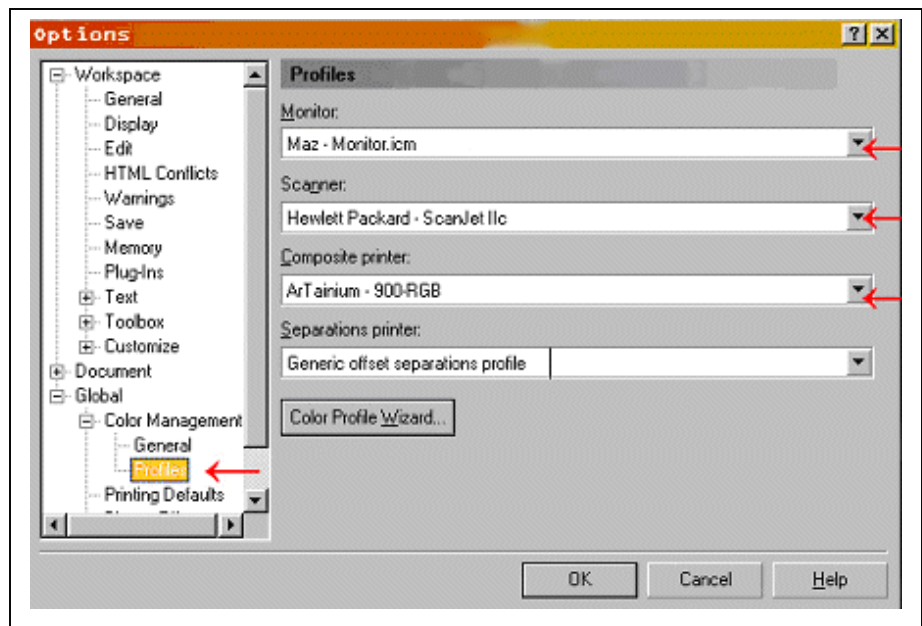
Note: You must have an image or blank page on-screen to select this option



Locate the **Profiles** Window by clicking the **Global** link /**Color Management** then **Profiles**

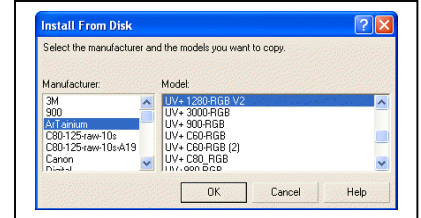
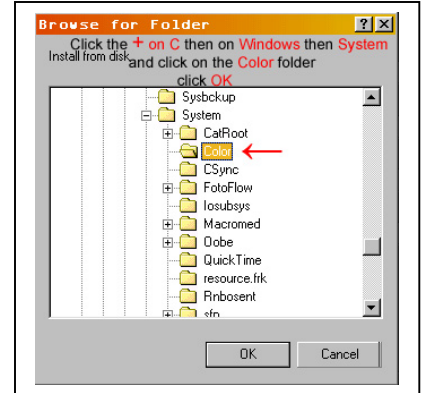
Here We will configure Corel's default ICC Profiles

See table below



Color Management Options

Monitor:	Select the ICC profile for your monitor (If you also have Adobe Photoshop on your system you can select the profile you created in Adobe Gamma). <p style="text-align: center;">If in doubt, leave it as Generic CMYK</p>
Scanner:	Select your scanner ICC profile. If your scanner is not listed you can leave it as the default. If you scan your images through the scanner's own software, this setting is redundant.
Composite Printer: **Important**	Click the Composite Printer Select Arrow and choose Get profile from disk... <div style="border: 1px solid black; padding: 10px; margin: 10px 0;"> <p>The 'browse for folder' window will appear and you need to locate the color profile folder for your operating system. This varies for each windows version. The folder you need to locate is as follows:</p> <p style="text-align: center;">Window 95/98/ME c:\windows\system\color</p> <p style="text-align: center;">Window NT c:\winnt\system32\color</p> <p style="text-align: center;">Window 2000 c:\winnt\system32\spool\drivers\color</p> <p style="text-align: center;">Window XP c:\windows\system32\spool\drivers\color</p> </div> <p>Once you have located your color folder click on it to open the folder and click 'ok'. The 'Install from disk' box will appear. Click on 'Artainium' in the manufacturer list and click on your printers profile under the model list then click 'ok'</p> <p>The correct profile will now show under 'Composite Printer'</p> <p>Note: if you can't choose the Artainium RGB profile from the drop down menu it means the ICC profile is not yet installed on your pc or you may not have restarted Corel since the ICC installation. Close and re-launch Corel</p>
Separations Printer:	Not used or set to your current device if you print separations.

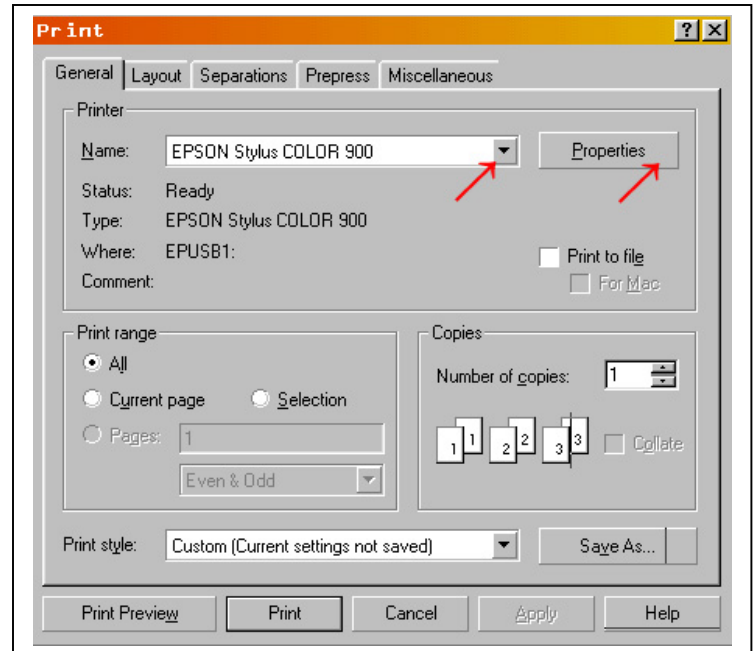


Corel's default printer, scanner and monitor ICCs are now set. And the Artainium ICC can be selected in the print setup window when we go to print.

You can now work with an image as normal.

When your image is ready to print-
Click **File – Print**

Select your printer and click
Properties

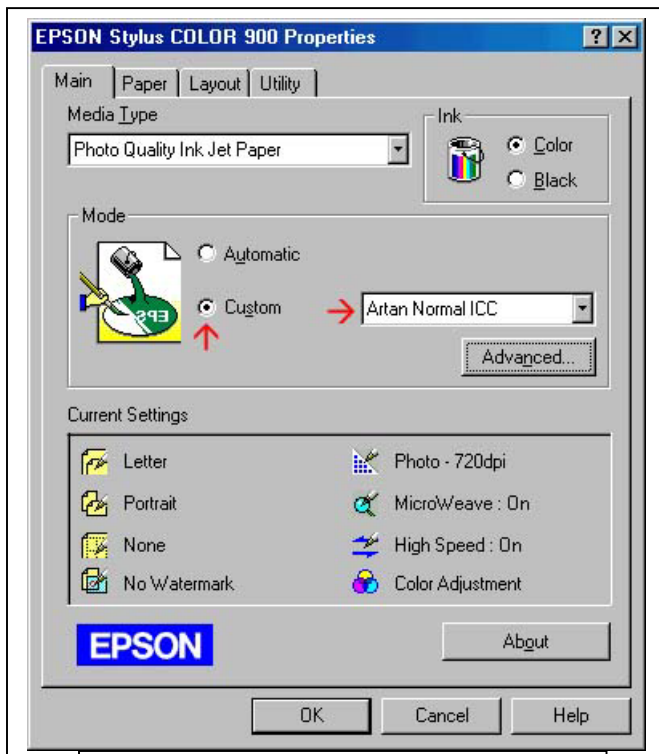


Click the **Custom** Button

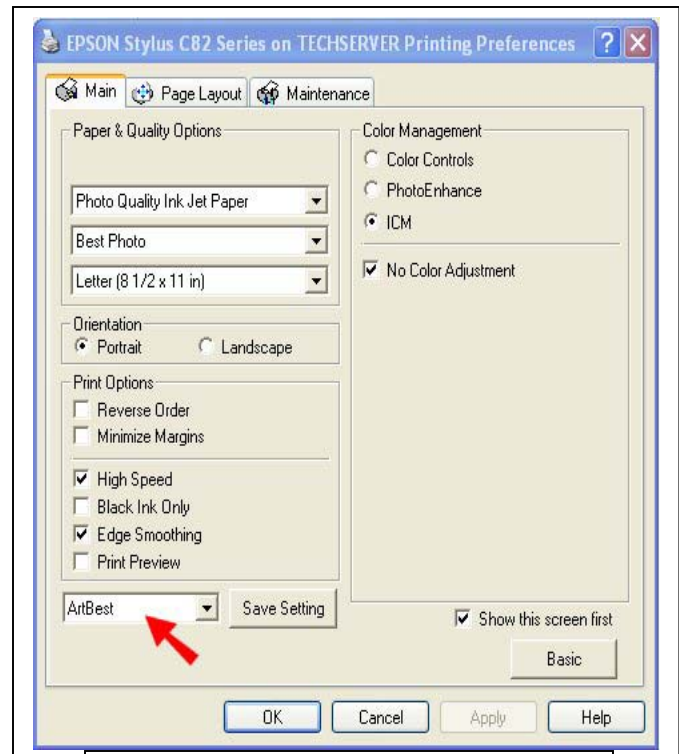
Select the Artainium print setup created when you configured the Epson print driver.

You can click 'Advanced' to double-check your settings

Click **OK** (takes you back to the previous screen)



Old style printer driver :- 3000, 900,
980, C80, 1280

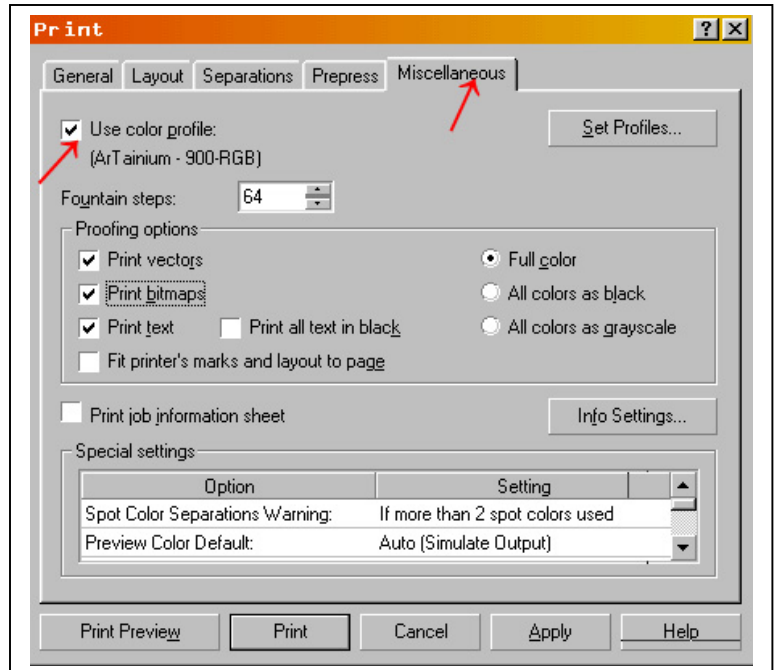


New style printer driver :- C82, 2200

Click the **Miscellaneous** Tab

Check Use Color Profile. You should see the name of the Artainium ICC profile next to the check box as shown above.

Click **print**



Corel will now print your image using the Artainium ICC profile combined with the configured Epson print Driver

Note: if the Artainium RGB profile is not shown next to the Use Color profile check box Means the ICC profile has not been set up in the global color options, or is not yet installed on your pc or you may not have restarted Corel since the ICC installation. Close and re-launch Corel.