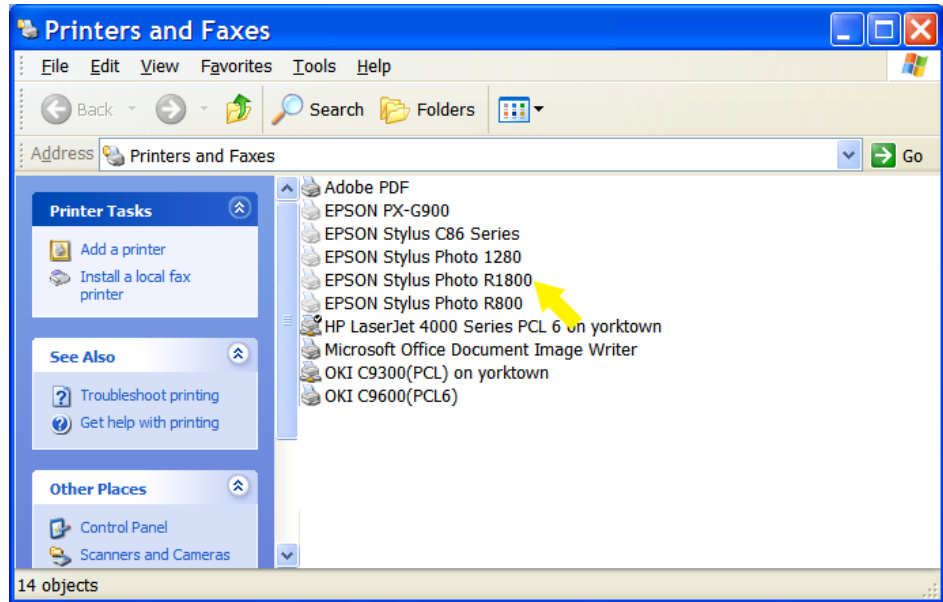




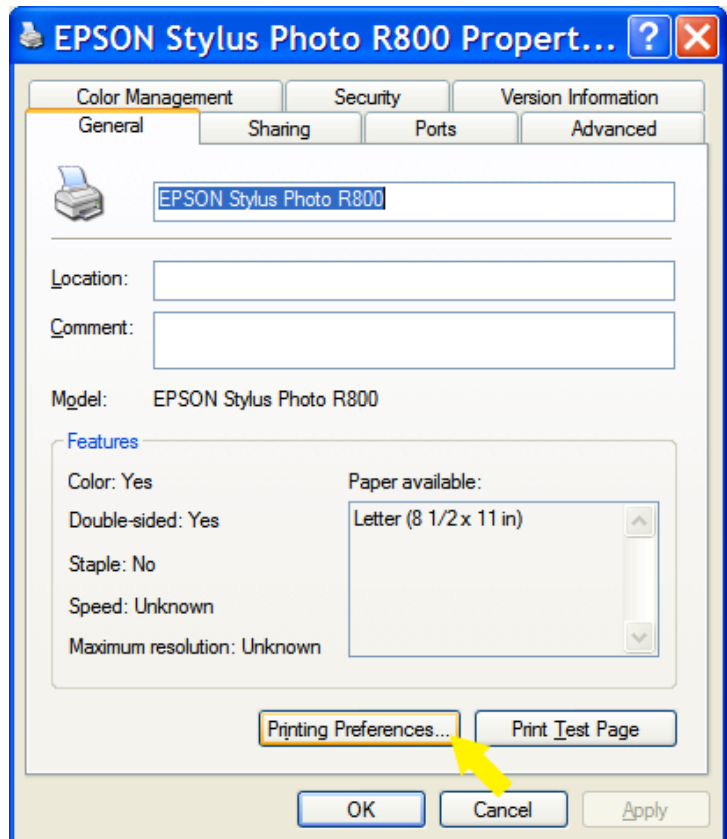
Configuring the Epson Stylus Photo R1800/R800 Print Driver For Artainium ICC Profiles

1. On the PC Desktop, click **Start – Settings – Printers**.
2. **Right Click** the Epson Stylus R1800 or Epson R800 Printer Icon and select **Properties** from the context menu



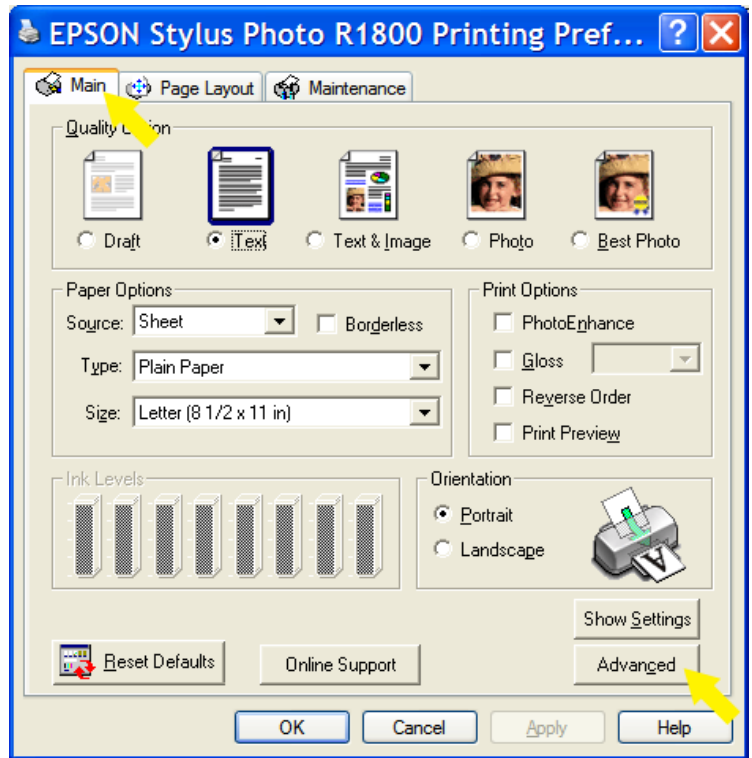
****Windows XP users only****
The first screen you will see will be this one :-

You need to click on ‘Printer Preferences’ first to get to the next screen.



If you do not see the 'Main' tab on the printer driver when you have clicked on ‘Printing Preferences’ then it is the wrong driver. There are updated drivers available on the Epson website for downloading.

Click on the **Main** tab
Then Click **Advanced**

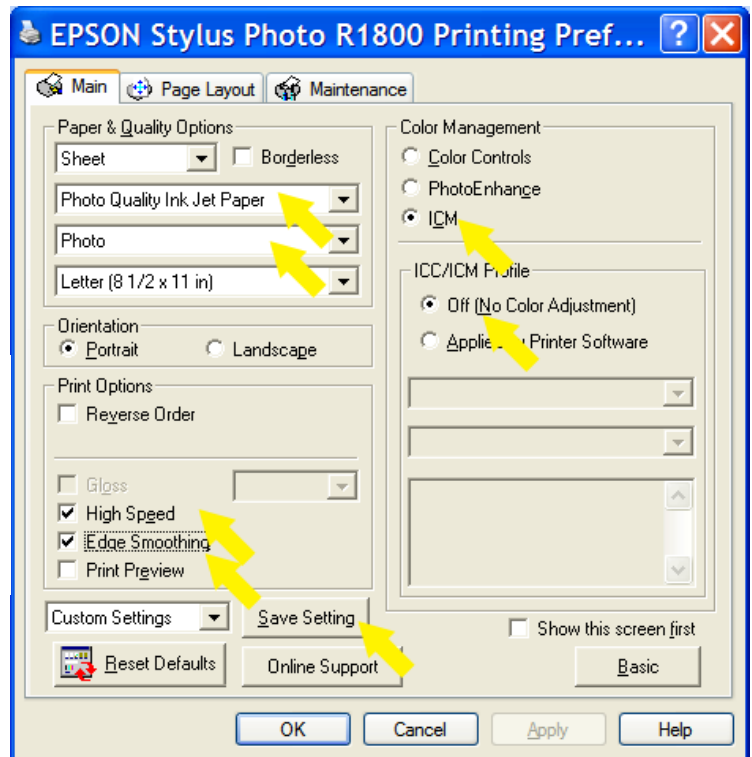


Media Type: Photo Quality Ink Jet Paper
Print Quality: Photo
Color Management: ICM
ICC/ICM Profile: Off (No Color Adjustment)
High Speed: On
Edge Smoothing: On

The most important setting in the print driver is the **No Color Adjustment**. This setting turns off all the color correction settings in the printer driver. Your graphics software using the Artainium ICC profile handles all the color correction.

Now your settings are set, we're going to save them so you won't have to repeat the process every time you want to print.

Click **Save Settings**.



Type in a name in the field marked **Name**:
Click **Save**; this will take you back to the previous screen
Now you are ready to Print

The image shows a software dialog box titled "Custom Settings...". It has a blue header bar. Below the header, there is a section labeled "List:" followed by a large empty rectangular box. Underneath this is a "Name:" label next to a text input field containing the text "TG R1800". A yellow arrow points to the right side of this input field. At the bottom of the dialog, there are three buttons: "Save", "Delete", and "Cancel".