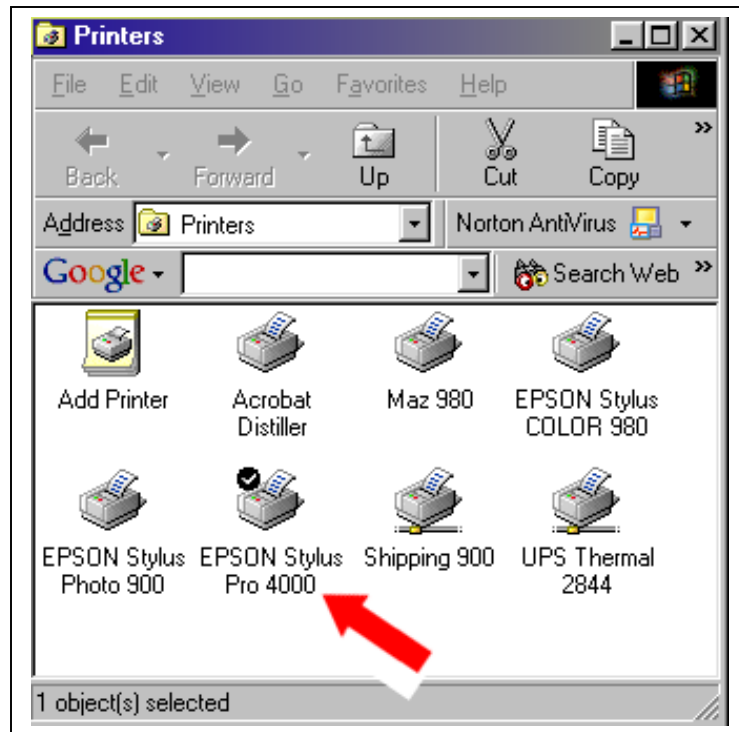


## Configuring the Epson Stylus Pro 4000 Print Driver For ArTainium ICC Profiles

1. On the Pc Desktop, click **Start – Settings – Printers**.

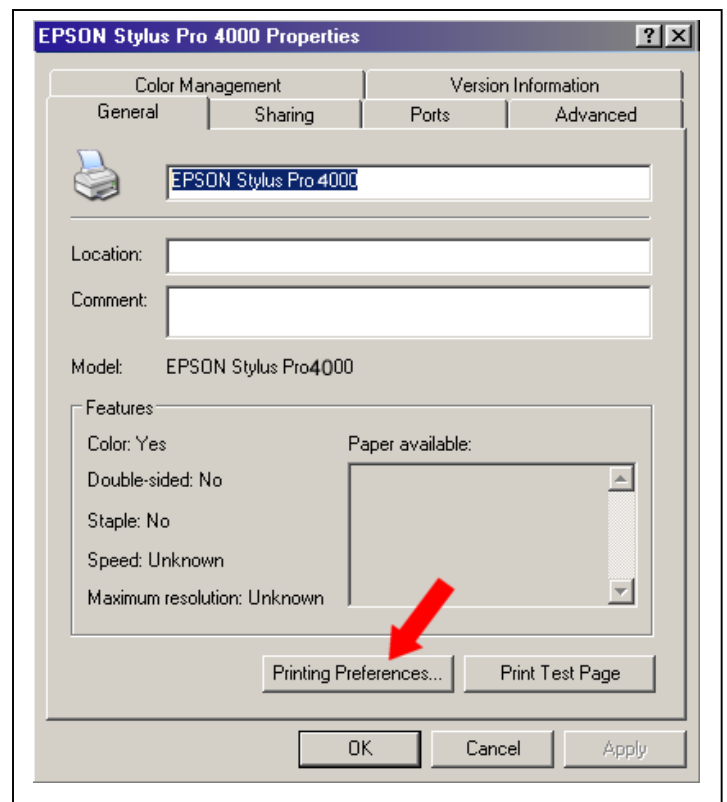
2. **Right Click** the Epson Stylus Pro 4000 Printer Icon and select **Properties** from the context menu



**\*\*Windows XP users only\*\***  
The first screen you will see will be this one :-

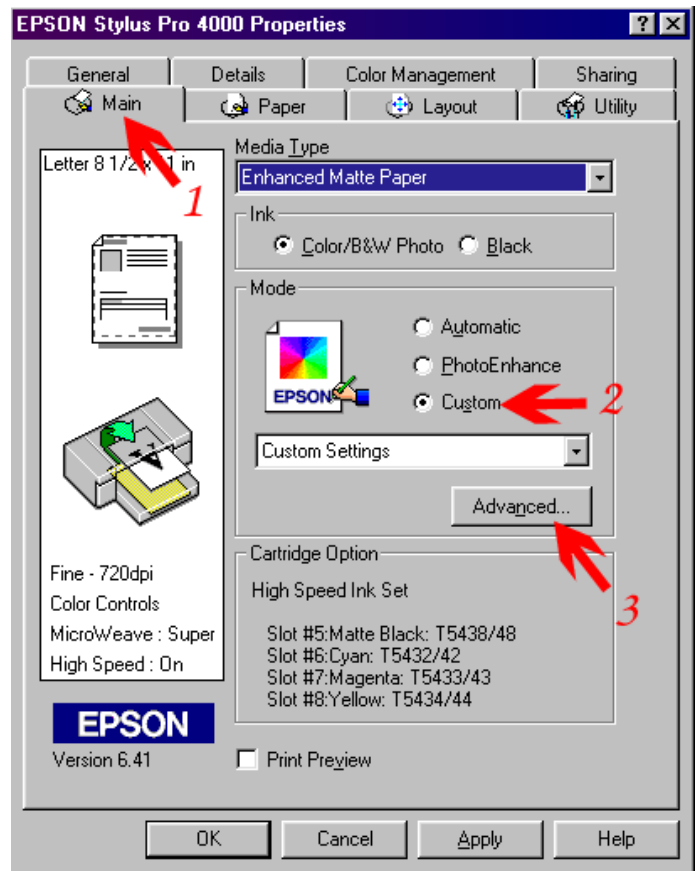
You need to click on 'Printer Preferences' first to get to the next screen.

If you do not see the 'Main' tab on the printer driver when you have clicked on 'Printing Preferences' then it is the wrong driver. There are updated drivers on the Epson website for XP and failing that people should use a Windows 2000 driver (again downloadable from the Epson site). I would advise that the 'false' driver be deleted from the printers section before installing the new driver. Once the new driver is installed the printer can be successfully set up the same way as previously on Win 95/98/ME.



When you see this screen, follow the instructions here :-

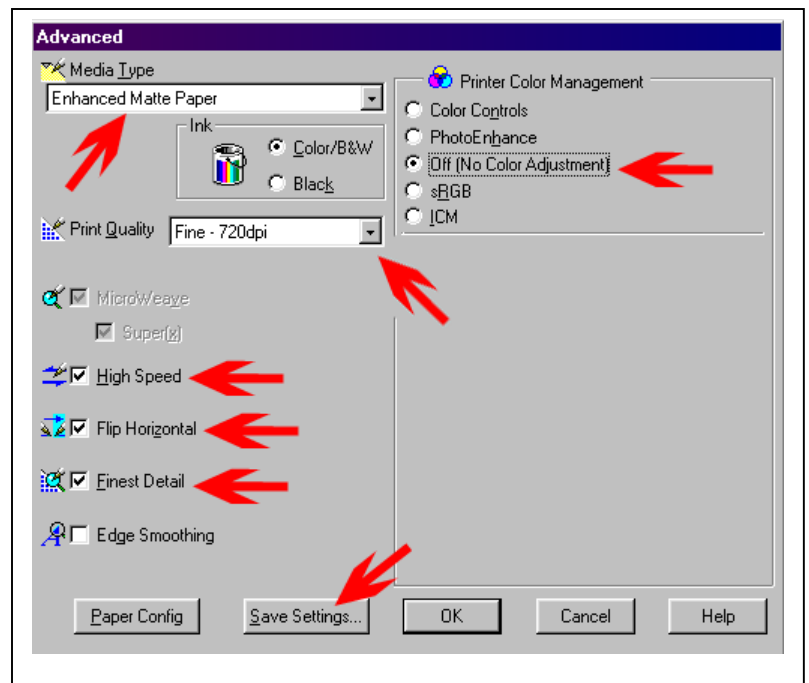
Click on the **Main (1)** tab  
Click Mode: **Custom (2)** then  
Click **Advanced (3)**



From this point we will now configure the print modes for all substrates.

Select the settings as shown.

**Media Type:** Enhanced Matte Paper  
**Print Quality:** Fine 720  
**Color Management:** NO Color Adjustment  
**Microweave:** Pre-set to On  
**High Speed:** On  
**Flip Horizontal:** On  
**Finest Detail:** On



Now your settings are set, we're going to save them so you won't have to repeat the process every time you want to print.

Type in a name in the field marked **Name:**  
 Here I have typed in a suggestion  
 “ArTainium”  
 Click **Save**; this will take you back to the  
 previous screen.

Click **OK**.. Click **OK** again and close the  
 printer window.

The most important setting in the print  
 driver is the **No Color Adjustment**. This  
 setting turns off all the color correction  
 settings in the printer driver. Your graphics  
 software using the Artainium ICC profile  
 handles all the color correction.

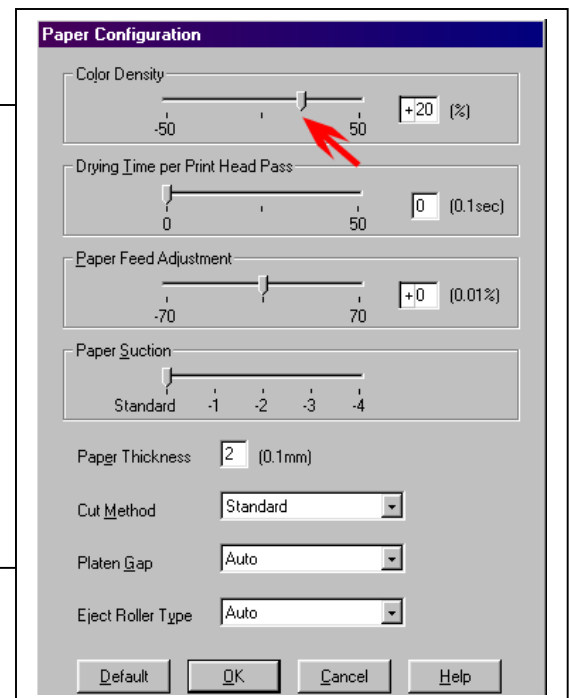
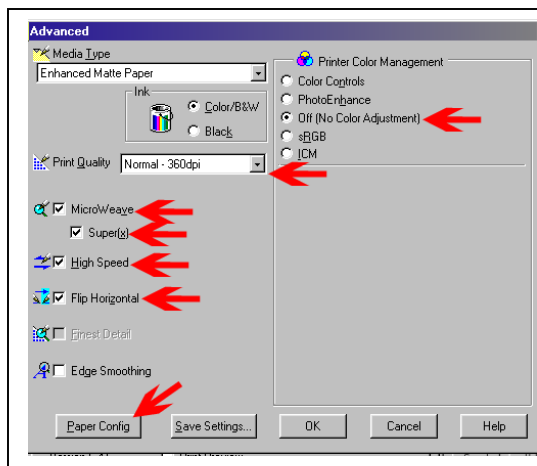


The Above setup is ideal for printing/transferring to hard substrates i.e. Ceramics, Metal, Unisub etc.

The driver can be set to print quicker at a lower resolution ideal for softer substrates i.e. Fabric Banners, T-shirts Mouse Pads etc.

Use these settings-

- Media Type:** Enhanced Matte Paper
- Print Quality:** Normal – 360dpi
- Color Management:** Off -NO Color Adjustment
- Microweave:** On
- Super(x):** On
- High Speed:** On
- Flip Horizontal:** On



When using the lower resolution settings above, you may  
 need to increase the color density when printing solid fill  
 logos etc. To do this, click on the Paper **Config** button in the  
**Advanced** screen and Increase the **Color Density** to about  
**20%** Then click **OK**. Save this setting if you wish.